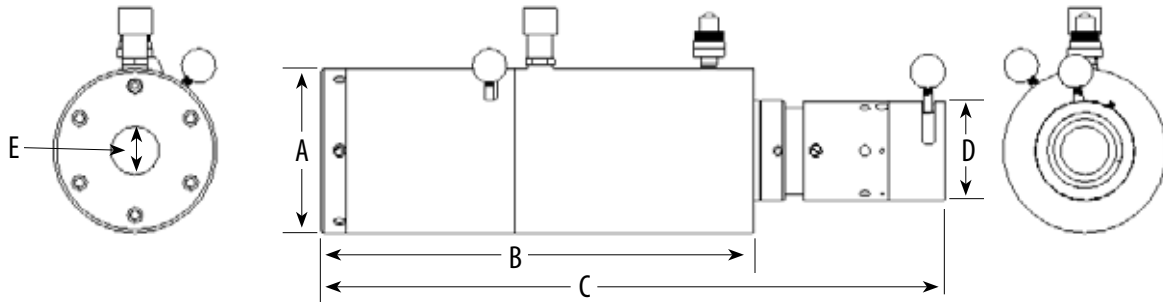


ZipPULLER Subsea Hydraulic Flange Puller



Technical Specifications



Model		A	B	C	D	E	Stroke	Weight	Pull Capacity
FP3006Z104	Imperial	4.75"	18.00"	25.00"	2.65"	1.30"	6.00"	65 Lb	30 Ton
	Metric	12.06 cm	45.72 cm	63.50 cm	6.71 cm	3.30 cm	15.24 cm	29.5 Kg	
FP6005Z114	Imperial	6.50"	17.25"	25.0"	4.00"	2.00"	5.00"	100 Lb	60 Ton
	Metric	16.51 cm	43.81 cm	63.50 cm	10.16 cm	5.08 cm	12.7 cm	45.3 Kg	

Power Units

ZipPULLER Subsea Flange Pullers can be operated with portable, hydraulic 10,000 psi power units.

FASTORQ® Air Model 205A or Electric Model 215E will provide an ideal combination of pressure and flow.

Standard equipment includes filter, regulator, lubricator, fittings and safety locks on quick disconnects, pressure gauge, remote controlled hoses and hydraulic hoses.



Air Model 205A



Electric Model 215E

