

ThinLINE Wrench

610A Power Unit

For best speed and performance we recommend powering ThinLINE wrenches with an AutoTORQ Power Unit.

Model 610A (shown) operates up to ten times faster than traditional torque wrench power units.

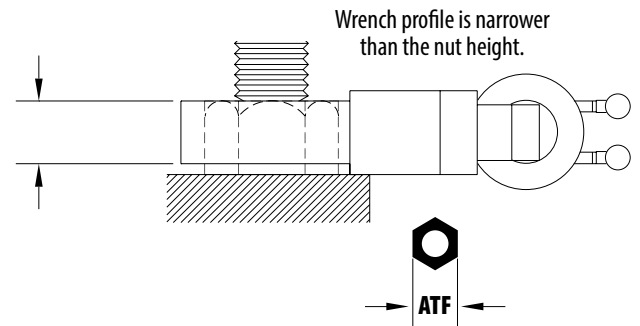
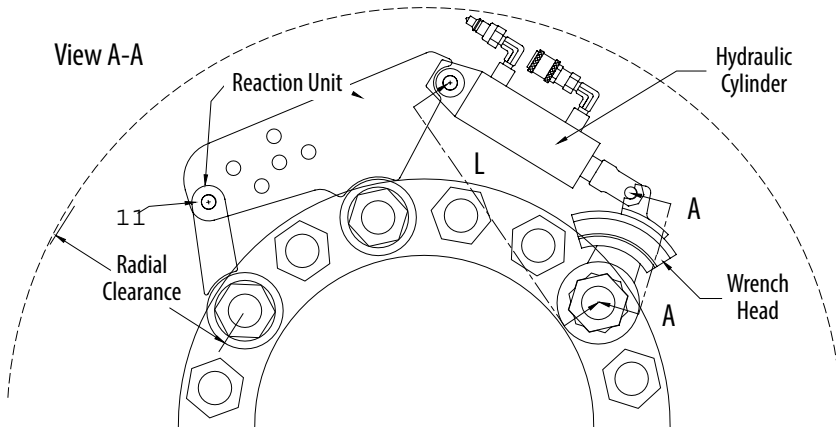
EXAMPLE SET:

Standard wrench sizes for model 200-6:

2-3/16" - 2-3/8" - 2-9/16"

2-3/4" - 2-15/16" - 3-1/8"

Each size includes a wrench head and reaction unit. All wrenches in this series use the 200-6 hydraulic cylinder.



Model	Color	Maximum Torque		Range of Bolt Sizes		Range of Nut Sizes - ATF		Radial Clearance	
		Ft. Lb. @ 5500 PSI	Nm @ 380 Bar	In	MM	In	MM	In	MM
150-4	Orange	3,240	4,406	3/4 - 1-1/4	19-32	1-1/4 - 2	32-51	9	228
200-6	Yellow	8,640	11,710	1-3/8 - 2	33-52	2-3/16 - 3-1/8	55-80	11	280
250-9	Green	20,250	27,450	1-7/8 - 3	48-85	2-5/16 - 4-5/8	75-120	14	365
325-12	Blue	41,840	56,730	2-3/4 - 3-1/2	70-89	4-1/2 - 5-3/8	110-135	20	500
325-18	Black	68,440	92,790	3-1/2 - 4 1/4	89-108	5-3/8 - 6-1/2	135-165	25	685
400-24	Black	138,230	187,410	4 - 5 1/4	102-133	6-1/8 - 8	135-210	30	762

